



ORDERING INFORMATION

Thank you for purchasing these special cards by RCMA kids!

Please fill out this form and fax, mail or email to:
Mail: RCMA - 402 West Main Street, Immokalee, FL 34142
Email: sonia.tighe@ffva.com | **Order online:** <https://bit.ly/3wW3PKc>
Fax: 321-214-0210 | **Call:** 1-800-282-6540

***Order deadline is December 13, 2021**

Name: _____
Company: _____
Shipping address: _____
Billing address: _____
City: _____ State: _____ ZIP: _____
Phone: _____
Email: _____
Credit card #: _____
CVV: _____ Exp. date: _____
Signature: _____

1 - Holiday cards! - Non-exclusive order

Card #	Quantity:
_____	10 @ \$15.00 \$ _____
_____	10 @ \$15.00 \$ _____
Variety pack:	10 @ \$15.00 \$ _____

2 - Exclusively yours - One-of-a-kind order (minimum order 100 cards)

Call toll-free to reserve your exclusive design. Send your completed order with full payment. All orders will be processed on a first-come, first-serve basis. Price: \$150 for the first 100 cards and envelopes, \$350 for the first 250, or \$650 for the first 500.

Card #	Greeting #	Quantity:
_____	_____	100 @ \$150.00 \$ _____
	additional cards _____	@ \$1.50 ea \$ _____
	additional cards _____	@ \$350.00 \$ _____
	additional cards _____	@ \$1.40 ea \$ _____
	additional cards _____	@ \$650.00 \$ _____
	additional cards _____	@ \$1.30 ea \$ _____

Custom printing for personal name, company name or logo @ \$30 per design \$ _____

- Choose one of the following greetings:
1. Wishing you a very Merry Christmas
 2. Warm wishes for a happy holiday season
 3. May your holidays be bright
 4. May peace, joy and happiness bless your holiday season
 5. Create your own greeting*

Exclusive subtotal \$ _____

Print below personal / company name to appear in your greeting:

*Create your own greeting (please print): _____

3 - Shipping and handling charges

For orders up to:

\$49 add \$10;	\$100 - \$349 add \$18;
\$50 - \$74 add \$16;	\$350 + add \$20
\$75 - \$99 add \$17;	S&H subtotal \$ _____

Payment total \$
With shipping added

RCMA
OPENING DOORS TO OPPORTUNITIES
402 West Main Street
Immokalee, Florida 34142
Toll free: 1-800-282-6540
www.rcma.org

Project partners:
Many thanks to the individuals and organizations volunteering to make this fundraiser possible.
• DUDA
• Florida Citrus Mutual
• Florida Fruit & Vegetable Association (FFVA)

Additional contributions of time and services given by:
• American Fruit Grower
• In The Field
• American Vegetable Grower
• Lawton Printers
• Citrus Industry
• Produce News
• FloridAgriculture
• Southeast AgNet
• Florida Grower Magazine

Print Angels:
Print costs for our 2021 Holiday cards will be offset by the generous support of our Print Angels.
• DiMare Fresh
• DUDA
• Florida Citrus Mutual
• Florida Fruit & Vegetable Association (FFVA)
• Lipman Family Farms
• PGIM Real Estate
• Wheeler Farms
• Wilma and Salvador Melendez
• Wish Farms

RCMA
OPENING DOORS TO OPPORTUNITIES

Christmas
CARDS
2021
DESIGNED BY RCMA KIDS



Ricky drew The Three Wise Men as a seventh grader at RCMA Wimauma Community Academy where his favorite subject is art. When he grows up he wants to be an architect or a businessman. When he's not at school he will either be playing sports or doing homework! His parents work at a plant nursery.

RCMA provides quality early childhood programs, education, and support services to rural low-income children, ages infant through eighth grade. Using a thematic and integrative approach, RCMA focuses early on language and math while increasing self-esteem and social skills.

Order online at: <https://bit.ly/3wW3PKc>

CHRISTMAS BELONGS TO *Children*

Brighten a child's future by purchasing our student's personally crafted holiday cards. Your dollars help our kids with educational materials, supplies, and additional services inspiring high achievements. Every dollar raised qualifies RCMA for matching state funds. These kids appreciate your support!

Contact Sonia Tighe at: Sonia.tighe@ffva.com or call (321) 214-5245 to inquire about our special "Exclusive" orders with personalized photos, logos and greetings.

Go to: <https://bit.ly/3wW3PKc> to view these wonderful holiday renditions.

Order deadline is December 13, 2021

1 - Holiday cards! - Non-exclusive orders

Enjoy these 3 designs from our general selection of non-exclusive Holiday cards. Each \$15 package contains 10 cards with envelopes. See order form for details.



G1 Luis, Wimauma

May peace, joy and happiness bless your holiday season



G2 Diego, Immokalee

May your holidays be warm and bright



G3 Alejandra, Wimauma

Wishing you a happy holiday season

Holiday variety packs

10 cards for \$15, includes multiple designs, designs may vary.



2 - Exclusively yours - One-of-a-kind orders

Reserve your exclusive design today! Choose from one of the 35 designs shown here, or contact Sonia Tighe at (321) 214-5245 or sonia.tighe@ffva.com for a specialized design. Available on a first-come, first-served basis. Minimum purchase of 100 cards required. Available greetings are listed on the order form, or create your own! For an additional \$30, we will print your name or logo below the greeting. See order form for details. The design is exclusively yours for one year.

Proceeds from this year's sales will be included in the Ring the Bell: be the difference capital campaign to build a state-of-the-art Dual Language K-8 charter school in Mulberry, FL. Your support will elevate resources and holistic development for hundreds of children and families.



E1 Emily, Wimauma



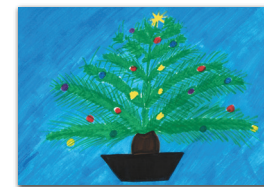
E2 Kaylo, Dade City



E3 Jessica, Wimauma



E4 Jennifer, Wimauma



E5 Jessica, Wimauma



E6 Rosario, Wimauma



E7 Jasmyn & Fernando, Wimauma



E8 Lymari, Immokalee



E9 Santiago, Wimauma



E10 Daniela & Kayle, Wimauma



E11 Gabriella & Omar, Immokalee



E12 Angelica, Wimauma



E13 Tanya, Wimauma



E14 Ethan, Immokalee & Juan, Homestead



E15 Meilin, Wimauma



E16 Melissa, Wimauma



E17 Ricky, Wimauma



E18 Brenda, Wimauma



E19 Zulma, Wimauma



E20 Johanna & Sarah, Wimauma



E21 Seily & Rosario, Wimauma



E22 Jocelyn, Homestead



E23 Briseida, Wimauma



E24 Armando, Wimauma



E25 Bruce, Berenice & Jazline, Wimauma



E26 Miguel, Wimauma



E27 Emery, Fellsmere



E28 Daniela, Wimauma



E29 Aiden, Wimauma



E30 Itzel, Wimauma



E31 Andrea, Wimauma



E32 Alessandra, Wimauma



E33 Esteban, Wimauma



E34 Maria, Wimauma



E35 Giselle, Wimauma

CONTRIBUTIONS BENEFIT REDLANDS CHRISTIAN MIGRANT ASSOCIATION, A NOT-FOR-PROFIT TAX-EXEMPT ORGANIZATION. A COPY OF THE OFFICIAL REGISTRATION AND FINANCIAL INFORMATION OF RCMA (CH-1947) MAY BE OBTAINED FROM THE FLORIDA DIVISION OF CONSUMER SERVICES BY CALLING TOLL-FREE (800-435-7352) WITHIN THE STATE OR 850-488-2221 FROM OUTSIDE FLORIDA. THE WEBSITE OF THE FLORIDA DEPARTMENT OF AGRICULTURE AND CONSUMER SERVICES IS [HTTP://WWW.FRESHFROMFLORIDA.COM](http://www.freshfromflorida.com). REGISTRATION DOES NOT IMPLY ENDORSEMENT, APPROVAL, OR RECOMMENDATION BY THE STATE. RCMA RECEIVES 100% OF EACH CONTRIBUTION.